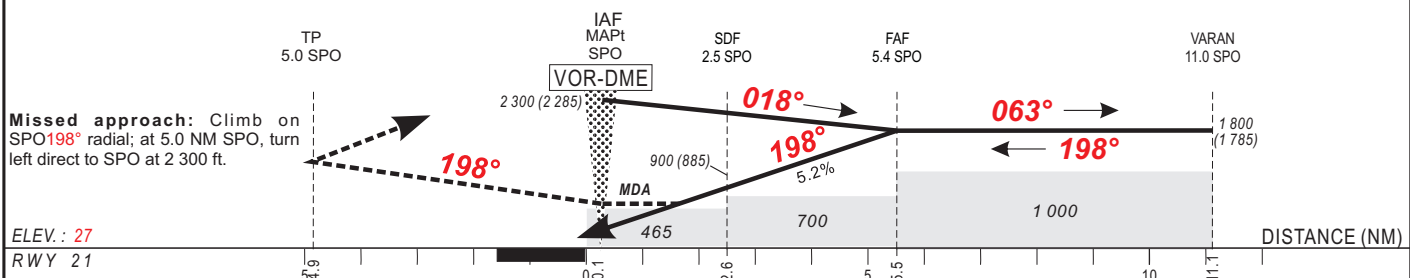


Distance to SPO (NM)	FAF		6	5	4	3	2	1	Notes : Inbound track offset 7.1° from runway centerline.
Altitude (ft)	1800			1630	1310	990	670	350	



CAT	VOR-DME				CIRCLING (*)			RVR for take-off: CAT A - B - C : 400
	OCA (OCH)	MDA MDH	RVR	OCA (OCH)	MDA MDH	VIS		
A	465 (450)	470 (450)	1500	768 (740)	770 (740)	1500	Timing FAF / THR 5.5 NM	
B	465 (450)	470 (450)	1500	768 (740)	770 (740)	1600		
C	465 (450)	470 (450)	2000	867 (839)	870 (840)	2400		
D								

Notes : - (*) OCH and MDH AAL

KT	MIN	SEC	KT	MIN	SEC
90	3	Min 24	140	2	Min 11
100	3	Min 04	150	2	Min 02
110	2	Min 47	160	1	Min 55
120	2	Min 33	170	1	Min 48
130	2	Min 21	180	1	Min 42